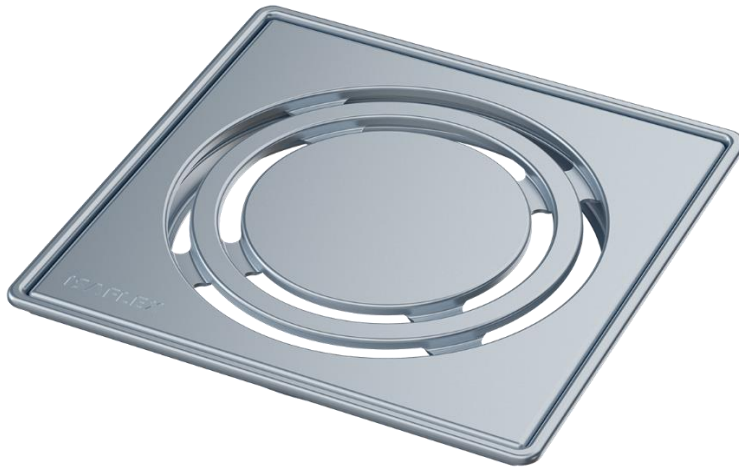


Slap grate with inox frame

Catalog number: 7040

EAN: 8606008730240



Application

- Installation on floor drain at the level of tiles in rooms with water drainage
- Installation on floor drain in showers with floor water drainage

Technical information

- Material: AISI 304
- Sheet metal thickness: 1,2mm
- Dimensions: 153x153x18mm
- Weight: 286g
- Load capacity: 300kg (class K3)

Standard

SRPS EN 1253

Logistic information

- Package: 20 pieces
- Package dimensions: 370x180x215mm
- Package weight: 6,2kg

Specification

- Grate is placed in inox frame by pressing the grate ("click clack" system)
- Straightened outer edges of inox grate frame ensure the correct position of the grate and contribute to the aesthetic appearance
- Sealed joint between inox grate frame and round extension
- Safe for bare feet walking

