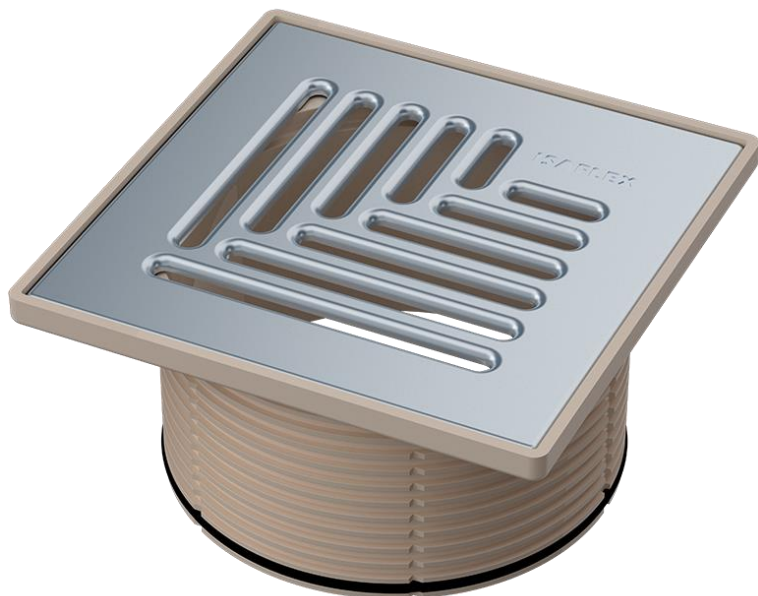


Square extension with Klas grate

Catalog number: 110 001

EAN: 8606008730462



Application

- Installation on floor drain at the level of tiles in rooms with water drainage
- Installation on floor drain in showers with floor water drainage
- Adjusting grate height by cutting square extension

Technical information

- Material: AISI 304, PP
- Sheet metal thickness 1,5mm
- Dimensions: 150x150x79mm
- Weight: 340g
- Load capacity: 300kg (class K3)

Standard

SRPS EN 1253

Specification

- Desired grate height is achieved by cutting square extension
- By rotating the square extension the grate is placed at the desired position
- Maximum height of the square extension is 79mm
- Minimum height of the square extension is 25mm
- Drainage channels ensure that water that appears outside the square extension goes into the drain
- Compatible with additional components and unpleasant odor prevention parts
- Supplied with the seal which ensures sealed joint between square extension and drain
- Safe for bare feet walking
- Copyrighted grid design
- Bigger height is achieved in combination with extension for waterproofing holder

